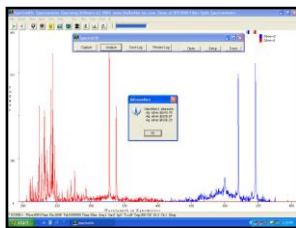


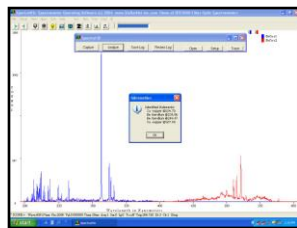


StellarCASE-LIBS Portable Instrument for Elemental Analysis

StellarNet proudly announces a new rugged and fully integrated portable Case System for elemental analysis using LIBS (Laser Induced Breakdown Spectroscopy). The StellarCASE-LIBS includes interior mounting of spectrometer instrumentation pre-configured for "Open & Measure" application, with no additional setup required. With a simple press of the "FIRE" button instantaneous Atomic Emission Spectra is collected and elemental match results are displayed on your screen.



StellarCASE-LIBS ID of 99.998% Silver



Spectral ID of 1.9% Beryllium + 98.1% Copper

The StellarCASE features an internal main power control system with ON, OFF, & Charge buttons. The LIBS sample chamber mounts directly into the system's acrylic mounting surface for direct easy access and includes a safety interlock. The system's excitation source is the world's smallest 1064nm NDYAG laser with 25mJ per pulse. Once the laser strikes your sample a PLASMA is created which will cool and emit radiation specific to the elements inside your sample.

The StellarCASE comes pre-configured with spectrometer instrumentation that covers 200-800nm with <0.2nm optical resolution. These spectrometers capture your samples emitted light spectrum and send the data to a top mounted tablet with factory installed SpectraWiz ID™ Software for elemental analysis.



Rugged Case for "Open & Measure" Applications



The system is completed with a safety key lock and an 8 hour battery lifetime for field use and portable application and comes with AC power adapters for use in your laboratory or classroom.

StellarCASE-LIBS can be useful for a variety of applications. Here's just a few:

- Industrial materials analysis
- Prospecting & Mining
- Environmental monitoring
- Homeland security measures
- Military chemical and biological agents
- Forensics analysis
- Pharmaceutical R&D
- Gemology and Counterfeit detection
- Nutrient Solution Ingredients of Metals- Fe, Mn, Zn, Mg, K, P, N. etc..

Specifications	StellarCASE-LIBS	
Spectrometer channels:	3 standard -1, 2 channel options	Case Dimensions: 6 x 11 x 13 inches
Spectrometer ranges:	200-800nm	Data transfer speed: 1ms per channel
Optical resolution:	0.2nm	Spectrometer Interface: USB2 / USB2 hub
Detector type:	2048 pixel CCD array	Laser power out: 2x consecutive 25mJ, 4ns pulse
Laser type:	Pulsed Nd-YAG @1064nm	Power to sample: 6 MegaWatts
Laser model & rep rate:	Kigre MK-367, 1 Hertz	Plasma chamber: 2 x 2 x 3 inches
Laser lifetime:	> 300,000 shots	Tablet Specs: Win8
Laser Power in:	350 mA @ 12 VDC	Software included: SpectraWiz Spectral-ID

