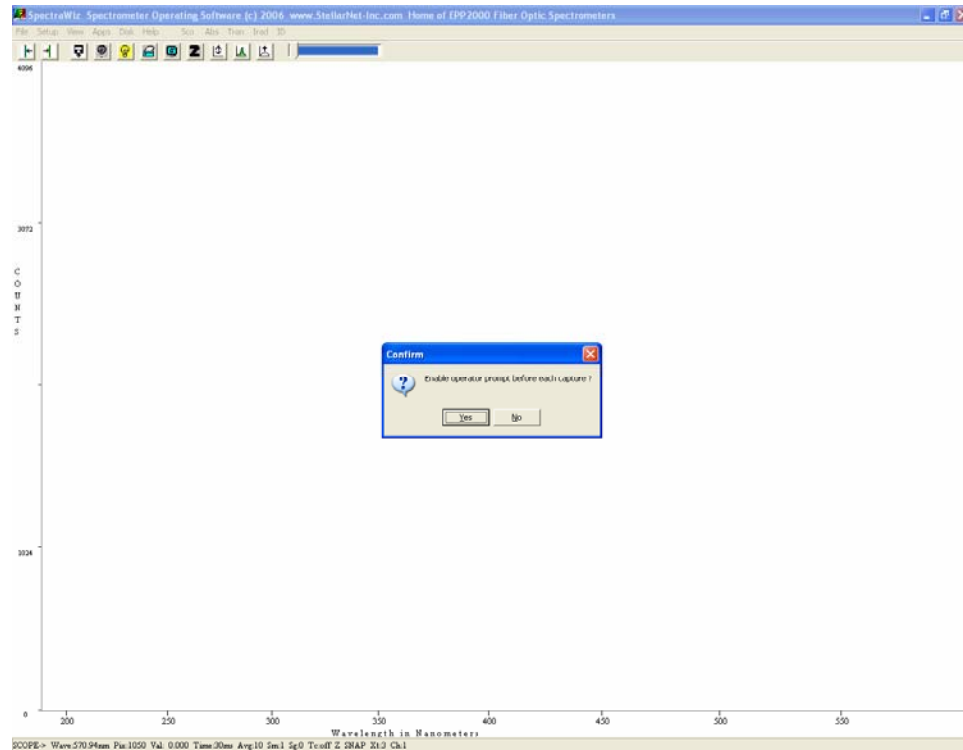
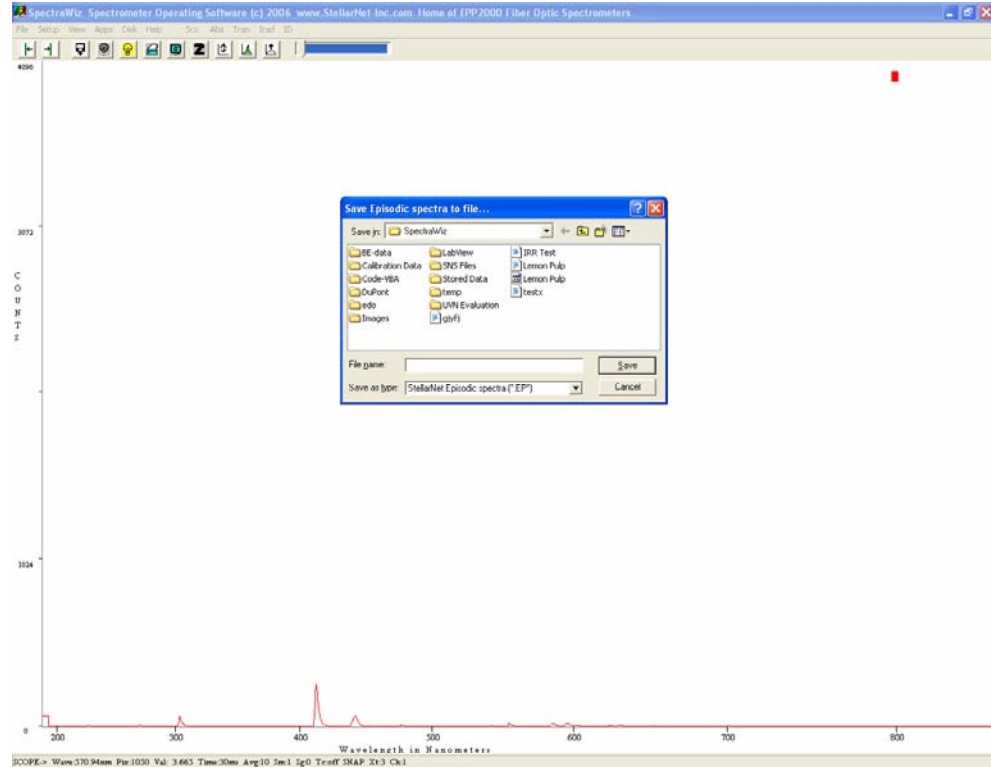


Tutorial: Episodic data capture:

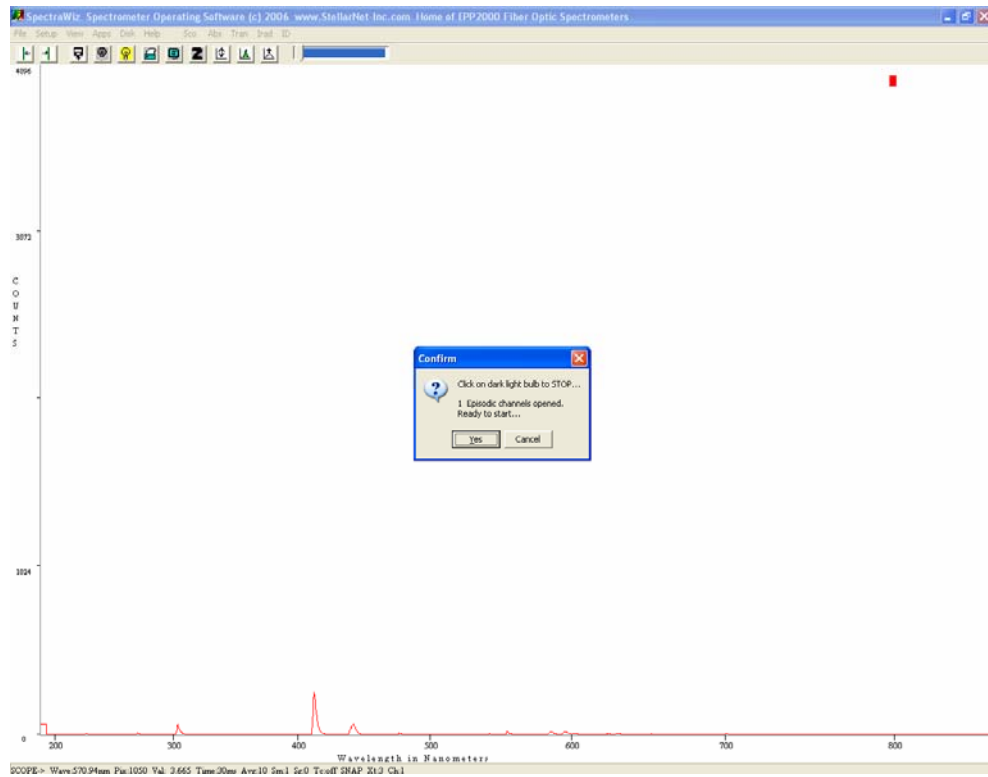
- 1) Go to File → Episodic data capture.
- 2) A window will appear asking for how many episodes to capture (or enter 1 for continuous capture; stopping the capture is defined by user) and press OK.
- 3) Enter the number of minutes to be delayed between episodes and press OK.
- 4) Enter the number of milliseconds between episodes and press OK.
- 5) If 0 is entered for both the minute and the millisecond delay, the software will ask the user to be prompted for each capture.



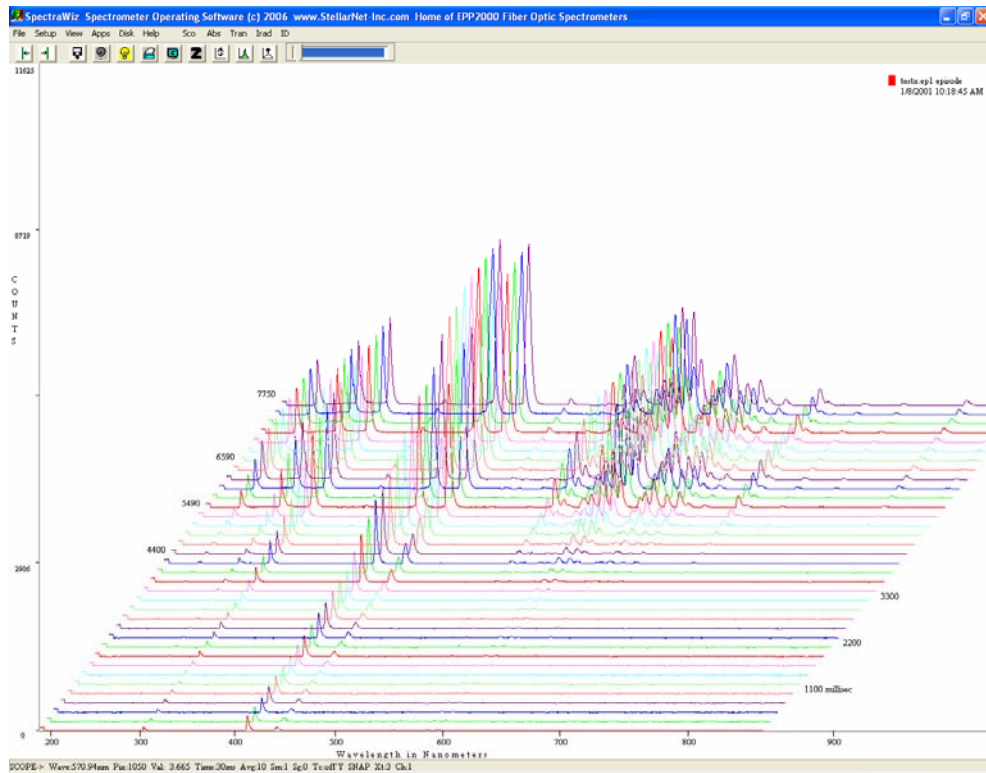
6) Enter a file name to save the episodic data set after the capture.



7) Press YES to start capture.

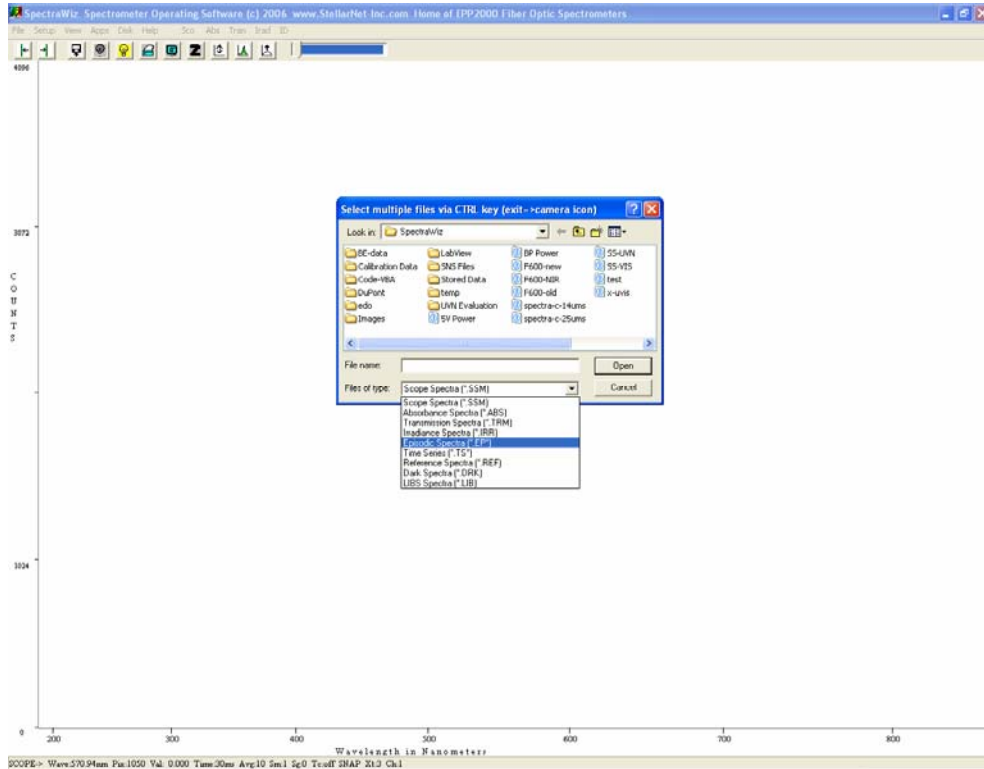


- 8) The software will automatically stop the capture after the number of episodes entered. If continuous capture was selected, press the Black light bulb icon to stop the capture.
- 9) After completion the spectrum will be displayed and the file saved.

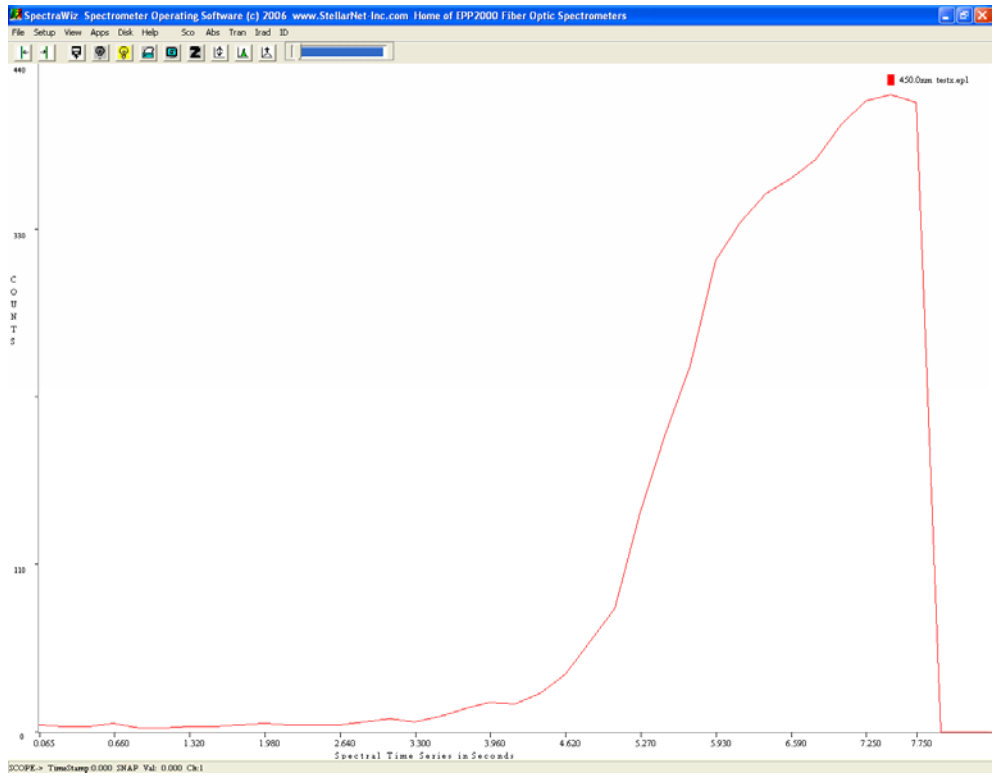


Episodic Data Capture: Display Time vs. Wavelength:

- 1) Open a stored episodic data capture file by going to File → Open → Of File
Type: Episodic Spectra (*.EP*).

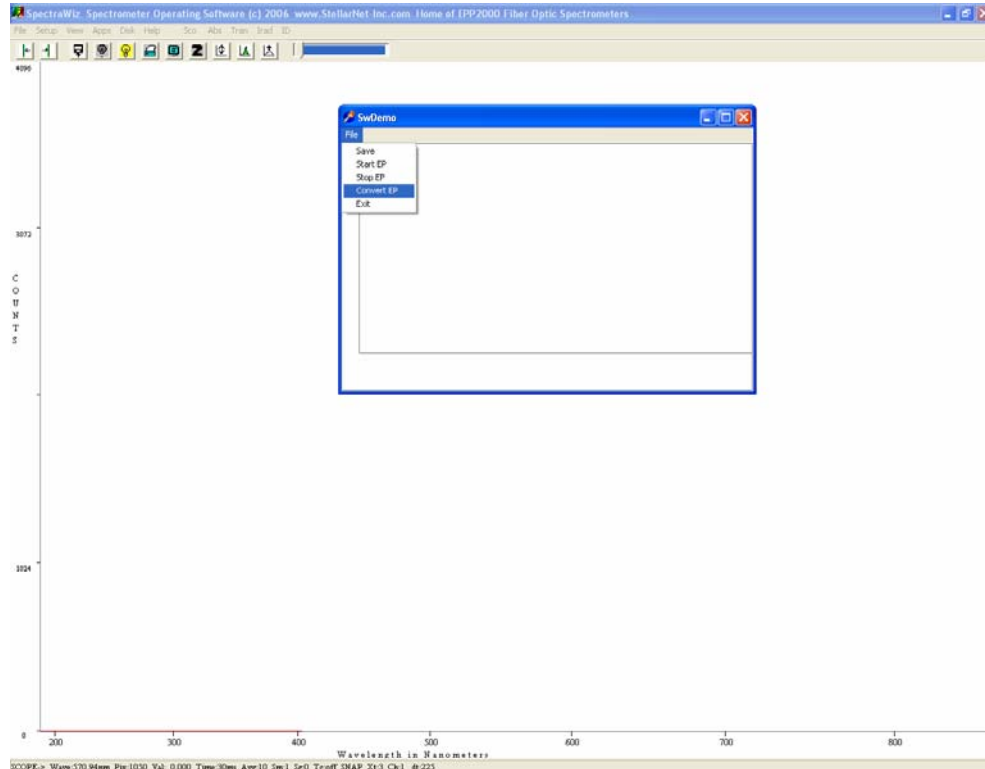


- 2) Press NO to display a Wavelength vs. Time series.
- 3) Select the first wavelength to be looked at.
- 4) Enter a 2nd wavelength or press 0 to continue.
- 5) Enter the number of episodes to be skipped, if any (if none enter 0).
- 6) SpectraWiz will then display the Wavelength vs. time series over the defined episodic capture series.



Episodic Data Capture: Importing an Episodic data file into Excel:

- 1) Download and install the free software package called “SwDemo.exe” from the StellarNet website (www.stellarnet.us/public/download/SwDemo.exe).
- 2) Run the program “SwDemoRun.”
- 3) Go to File → Convert EP.



- 4) Select the .ep file to be converted.
- 5) Enter the number of episodes to be skipped, if any (if none enter 0).
- 6) The file is automatically converted to an .EPIX file which can be imported into MS Excel.

