



# Spectrometer Driver and Software Installation

## Online registration

Go to [www.StellarNet.us/register](http://www.StellarNet.us/register) and register your StellarNet spectrometer to claim your one-year warranty and receive an email with StellarNet Driver and SpectraWiz Downloads.

**You must install the drivers before you try to install or run the SpectraWiz software.**

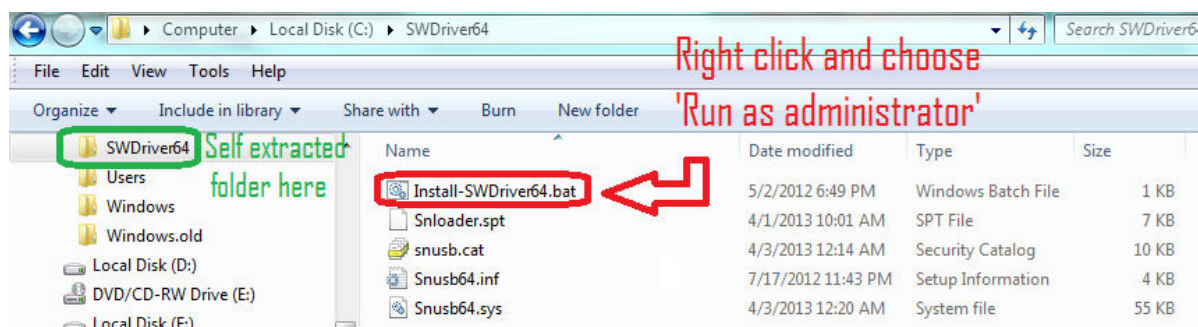
## Driver Installation

### Automatic Install for 64-bit Windows Vista/7/8/10

1. SWDriver64 installation is ok with or without spectrometer attached via USB.
2. Select *my computer* → *properties* to verify you have a 64-bit operating system.
3. Download SWDriver64.exe driver
4. Save the file to your desktop
5. Right click on the SWDriver64.exe icon on your desktop and choose to "Run as administrator"

6. A command prompt will pop up and look like there is an error message but it is normal if it looks like the image below:

7. Now you need to open Windows Explorer
8. Right click on the start menu and choose "Open Windows Explorer"
9. In the left-hand panel, scroll down to the C: drive and left click on it to display its contents in the right-hand panel
10. There should be a folder called SWDriver64
11. Open this folder
12. Right click on Install-SWDriver64.bat
13. Choose "Run as administrator"



14. If the spectrometer is not plugged in when you run this file, it will say this:

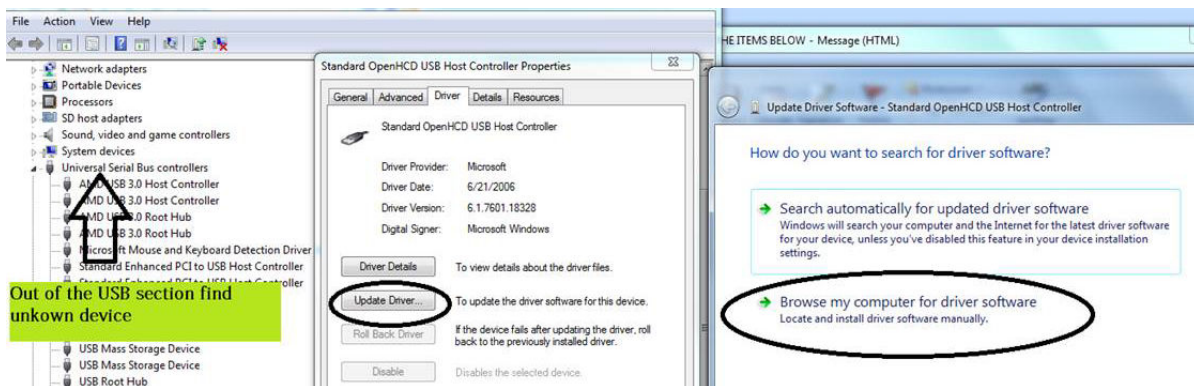
15. If you plug in the USB for the spectrometer into a properly functioning USB port, your instrument's green light should turn on.

16. If your green light doesn't turn on after following the above steps exactly, try following the steps again. If the 2<sup>nd</sup> attempt doesn't work try installing on a different USB port. If you are still having trouble, please contact StellarNet for assistance.

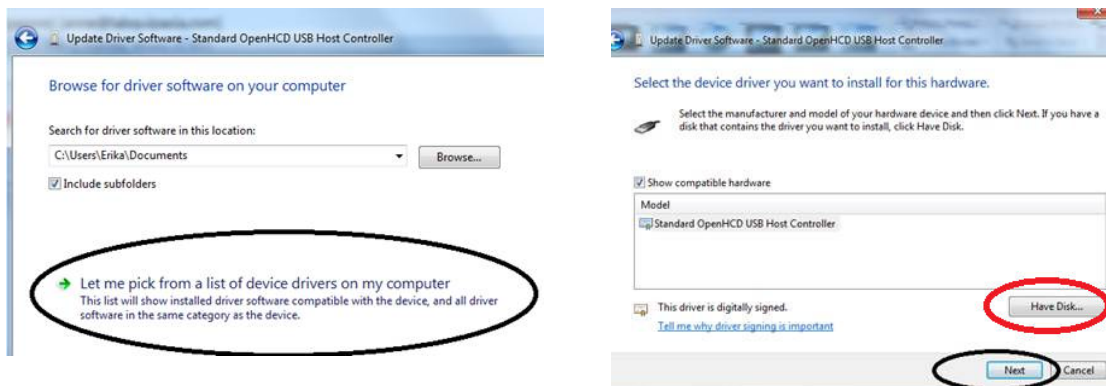
## Manual Driver installation for 32-bit system (also works on 64-bit)

Select **my computer** → **properties** to verify you have a 32-bit operating system.

- Make sure you right click on the SWDrivers.zip file on our website and save it to your desktop.
- Unzip it/extract it to your desktop by right clicking and choosing extract or unzip.
- The procedure will vary for each version of windows but the driver must be installed manually from the Windows Device Manager. To find the device manager you can usually find under the icon view of the Control Panel.
- With the spectrometer plugged in, find the "Unknown" device under the USB section, right click and choose "Update Driver." **Do not pick the option which searches automatically.**



- **Do** pick the option which appears to manually search in a specific location or a deeper option may appear which says "Have Disk." For all modern spectrometers, the file is C:\Users\YOUR NAME\Desktop\SWDrivers13\SWDrivers-USB2-Spectrometers\



## Software Installation

### 32-bit and 64-bit Windows Vista/7/8/10

After you have installed the correct driver you can proceed with installing the SpectraWiz Software on your computer.

Install the SpectraWiz Software by running the "SWUpdate-Install.exe" as Administrator. This is located in the StellarNet Software folder. A quick start desktop icon will appear.

1. Install latest version of SpectraWiz using SWUpdate.exe from StellarNet website. Click on SpectraWiz desktop icon to start, then verify continuous spectral graph display updates appear with spectrometer attached, then exit SpectraWiz.
2. Install intensity calibration files for SpectroRadiometer operation
  - a. The calibration files are installed by clicking USB drive:\MyCal-nnnnn.exe where "nnnnn" = spectrometer serial # shown on label. This self-extracting zip file moves all ".cal" files (if you ordered more than one) to C:\Program Files\StellarNet\SpectraWiz\SwCals
  - b. Start SpectraWiz and verify continuous spectral graph display updates appear. Get going FAST →WATCH the SpectraWiz software training videos on the USB-drive!

### Additional information

Additional information is available in the Spectrometer Manual on StellarNet USB-drive. For StellarNet technical support, Phone: 813-855-8687 or email: [Contactus@StellarNet.us](mailto:Contactus@StellarNet.us)

All spectrometers automatically load parameters from unit memory when SpectraWiz software is started from your windows computer.

Older spectrometers with parallel port connector plus USB2EPP cable (silver DB25 connector at other end of USB2 cable) require parameters to be entered the first time a unit is attached. Please contact StellarNet technical support for more information.

## Troubleshooting Installation

Feel free to [ContactUs@StellarNet.us](mailto:ContactUs@StellarNet.us) for technical support. If you experience any trouble installing your instrument on your computer, please include the serial number and model name of your spectrometer in your inquiry. A StellarNet support representative will be assigned to your case and typically provide a response within 24 hours.